



LEFEBVRE ENGINEERING FZC

Fabrication Experts since 1914....



History of LEFEBVRE GROUP since 1914

- **Before moving into Gulf in 2004, Lefebvre was known as "Lefebvre Freres Limited", a family owned business founded in 1914 in Montreal, Canada, by brothers Achille and Alphonse Lefebvre.**
- **Achille Lefebvre was the grandfather of Pierre Lefebvre, Managing Director and Deputy Chairman.**
- **The company initially specialized in babitting connecting rods and engine rebuilding for the automobile industry. After 30 successful years, Lefebvre Freres expanded into custom built machinery especially in the pulp and paper, chemical, petrochemical, steel and aluminium industries.**
- **When the business moved to Sharjah in 2006, Esterad Investments Limited a Bahrain based investment company joined as a shareholder.**

Lefebvre Engineering

Expertise Capabilities

- ❖ Design ,fabrication ,Installation
Commissioning and expertise in green
field and brown field of aluminum bus bars.
- ❖ Welding, Fabrication, Machining &
Installation of equipment and structures
(Aluminum /steel /Stainless steel/Alloys).
- ❖ Design ,fabrication , Assembly ,
Installation and commissioning of special
machines /Robots.



**Products & Services
to
Aluminum Smelters**

- **Bus bars**
- **Super Structures**
- **Startup Equipment's**
- **Anode Stems**
- **Anode Rod Assembly**
- **Crust breaker feeders**
- **Pot Shells**
- **Crucibles**
- **Risers**



Company Experience

Aluminium Smelters



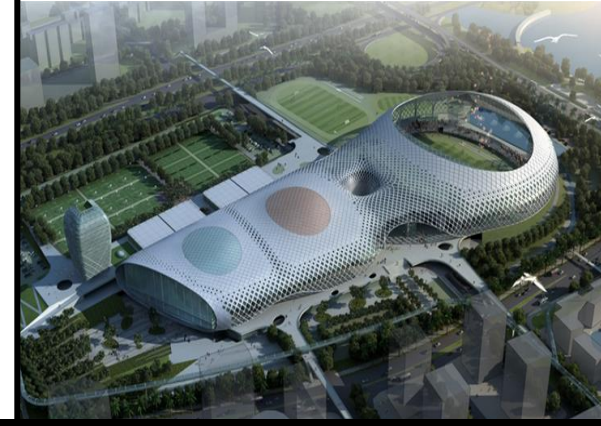
Oil & Gas



Power Plant



Others



Current Clients:



Fabrication Capabilities in GCC

Total nos. of employees:120 No's (Maximum 450 No's Peak)

Office space: 1500 Sq.m

Covered workshop space: 7,000 Sq.m

Total Plot Area 35,000 Sq.m

Open Storage Area : 28,000 Sq.m

Overhead cranes:15 No's(7.5 Tons to 20 Tons)

Bay 1 –3 No's

Bay 2 – 4 No's

Bay 3 – 4 No's

Bay 4 – 3 No's

JIB Crane 1 Ton- 9 No's

JIB Crane 2 Ton- 7 No's

Forklift –3 No's (3 to 12 Tons)



Lefebvre Engineering

DIVERSIFIED KEY SECTORS



OIL & GAS

Offshore Industries

- Steel Fabrication
- Special alloys Machining

Onshore Industries

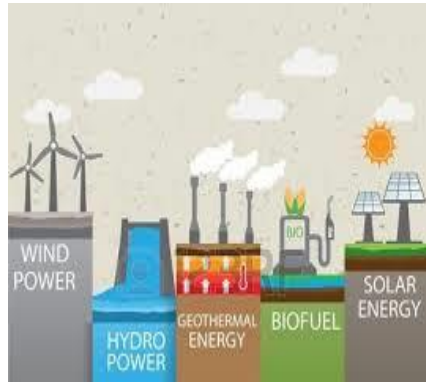
- Fabrication
- Machining

Storage tanks and vessels

Piping

Secondary Steel

Evaporators



ENERGY

Thermal Power Plant

Combined Cycle Power Plant

Waste to Energy

Wind Power

Solar Power

- Custom Fabrication
- Structural Steel
- Ducts – Inlet and exhaust systems
- Ash Silos



MANUFACTURING

Aluminium Smelters

- Bus bars
- Super Structure

Product base Industries

Automotive industries

- Custom Fabrication
- Machining



AEROSPACE

Aerospace Industries –
Training Simulators

- Custom Fabrication
- Parts manufacturing



MINING

Mining Equipment industries

- Supply
- Fabrication
- Machining

Minerals Processing Plants





CERTIFICATE OF AUTHORIZATION

The named company is authorized by the American Society of Mechanical Engineers (ASME) for the scope of activity shown below in accordance with the applicable rules of the ASME Boiler and Pressure Vessel Code. The use of the certification mark and the authority granted by this Certificate of Authorization are subject to the provisions of the agreement set forth in the application. Any construction stamped with this certification mark shall have been built strictly in accordance with the provisions of the ASME Boiler and Pressure Vessel Code.

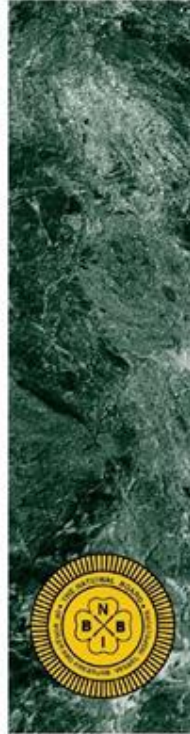
COMPANY: **LEFEBVRE ENGINEERING FZC**
 Plot No. 2H-02
 Hamriyah Free Zone Phase 1
 Sharjah
 United Arab Emirates

SCOPE:
Fabrication and assembly of pressure piping at the above location and field sites controlled by the above location

AUTHORIZED: **March 22, 2018**
 EXPIRES: **March 22, 2021**
 CERTIFICATE NUMBER: **55,993**

Richard Rottmann
 Board Chair, Conformity Assessment

Joseph Lefebvre
 Managing Director, Conformity Assessment



THE NATIONAL BOARD OF BOILER & PRESSURE VESSEL INSPECTORS

Certificate of Authorization



This is to certify that
LEFEBVRE ENGINEERING FZC
 Plot No. 2H-02
 Hamriyah Free Zone Phase 1
 Sharjah -
 United Arab Emirates
 Acceptable Abbreviation: LEF

is authorized to use the R Symbol in accordance with the provisions of the National Board Inspection Code and NB-115, Accreditation of "R" Repair Organizations.

All activities within the scope of this Authorization shall be controlled by the above location.

The scope of this Authorization is limited to:

Metallic
 Repairs and Alterations
 At
 Shop and Field Locations

Certification Number: 10799

Issue Date: April 5, 2018
 Expiration Date: March 22, 2021
 Executive Director: *David*



CERTIFICATE OF AUTHORIZATION

The named company is authorized by the American Society of Mechanical Engineers (ASME) for the scope of activity shown below in accordance with the applicable rules of the ASME Boiler and Pressure Vessel Code. The use of the certification mark and the authority granted by this Certificate of Authorization are subject to the provisions of the agreement set forth in the application. Any construction stamped with this certification mark shall have been built strictly in accordance with the provisions of the ASME Boiler and Pressure Vessel Code.

COMPANY: **LEFEBVRE ENGINEERING FZC**
 Plot No. 2H-02
 Hamriyah Free Zone Phase 1
 Sharjah
 United Arab Emirates

SCOPE:
Manufacture of pressure vessels at the above location and field sites controlled by the above location (This authorization does not cover impregnated graphite)

AUTHORIZED: **March 22, 2018**
 EXPIRES: **March 22, 2021**
 CERTIFICATE NUMBER: **55,992**

Richard Rottmann
 Board Chair, Conformity Assessment

Joseph Lefebvre
 Managing Director, Conformity Assessment



ASME U , PP and R stamp certified facility

UAE SHARJAH FACILITY –
350,000 Sq.Feet Since 2006





**FABRICATION FACILITY WITH
CNC MACHINING INHOUSE
(PLATE FABRICATION UPTO 100
MM THICK)**



OKUMA CNC MACHINING & TURNING CENTERS



**FULLY AUTOMATIC PIPE
SPOOL WELDING WITH
450,000 DIA INCH CAPACITY
PER ANNUM**

Dedicated project team to handle Automation projects

- **System integrator for the customers of major robot manufacturers in GCC.**
- **Successfully completed 3 automation projects in UAE.**



ABB

KUKA

FANUC



Lefebvre Engineering

 **Kawasaki**
Robotics

Custom Fabrication-Project Gallery



PROJECTS GALLERY



Lefebvre Engineering

PROJECTS GALLERY



Lefebvre Engineering

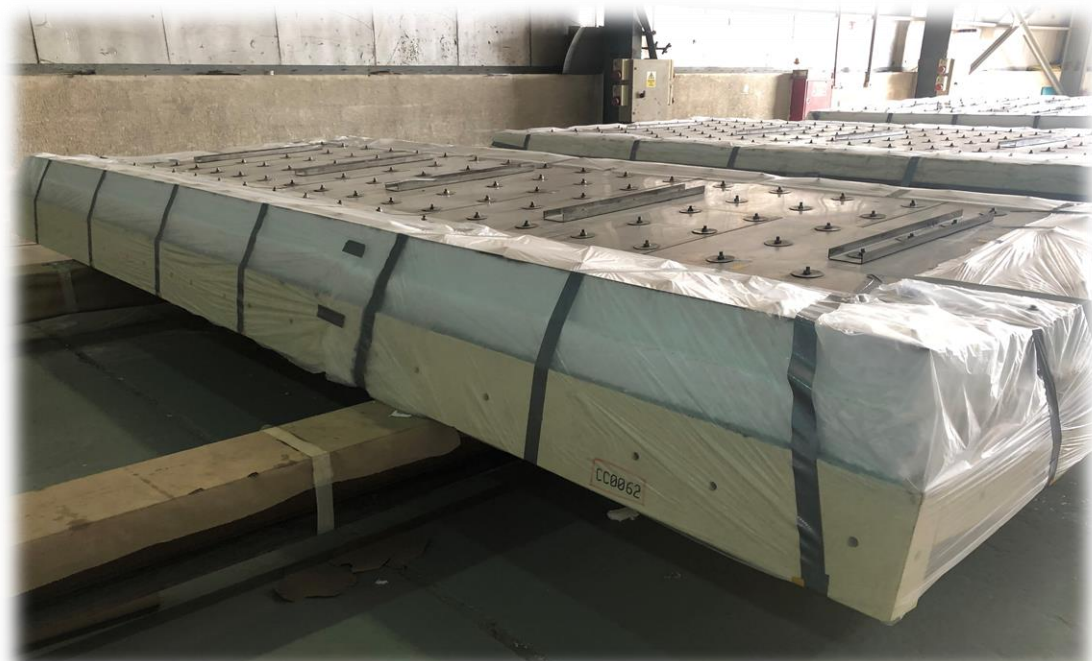
PROJECT GALLERY





Fabrication 4 meters Dia SS Dryers





DEWA POWER PLANT PROJECT-DUCTS Fabrication -CMI

ALUMINIUM GANGWAYS



Lefebvre Engineering

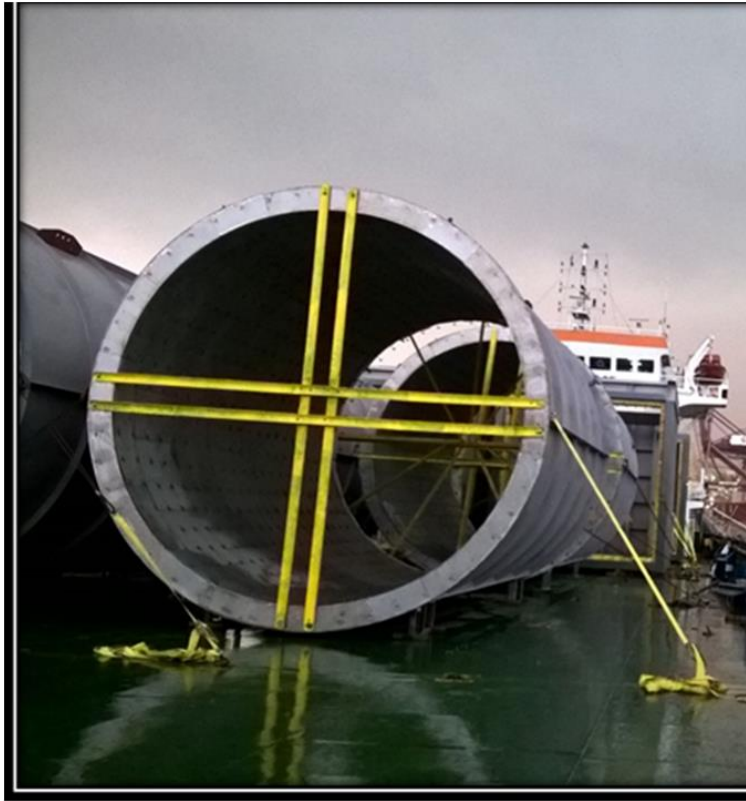
Easy Logistics Solutions for Global Project Procurement

- **Dedicated Logistics Team for handling customs and documentation.**
- **Facility is Strategically located in Hamriyah free zone ,Sharjah –UAE.**
- **Easy access to GCC highways.**
- **Within 200 meters Hamriyah ports access.**
- **Other Nearest Ports Are**
 - **Sharjah ports ,Sharjah**
 - **Jabel Ali Ports ,Dubai**
 - **Fujairah Ports , Fujairah**



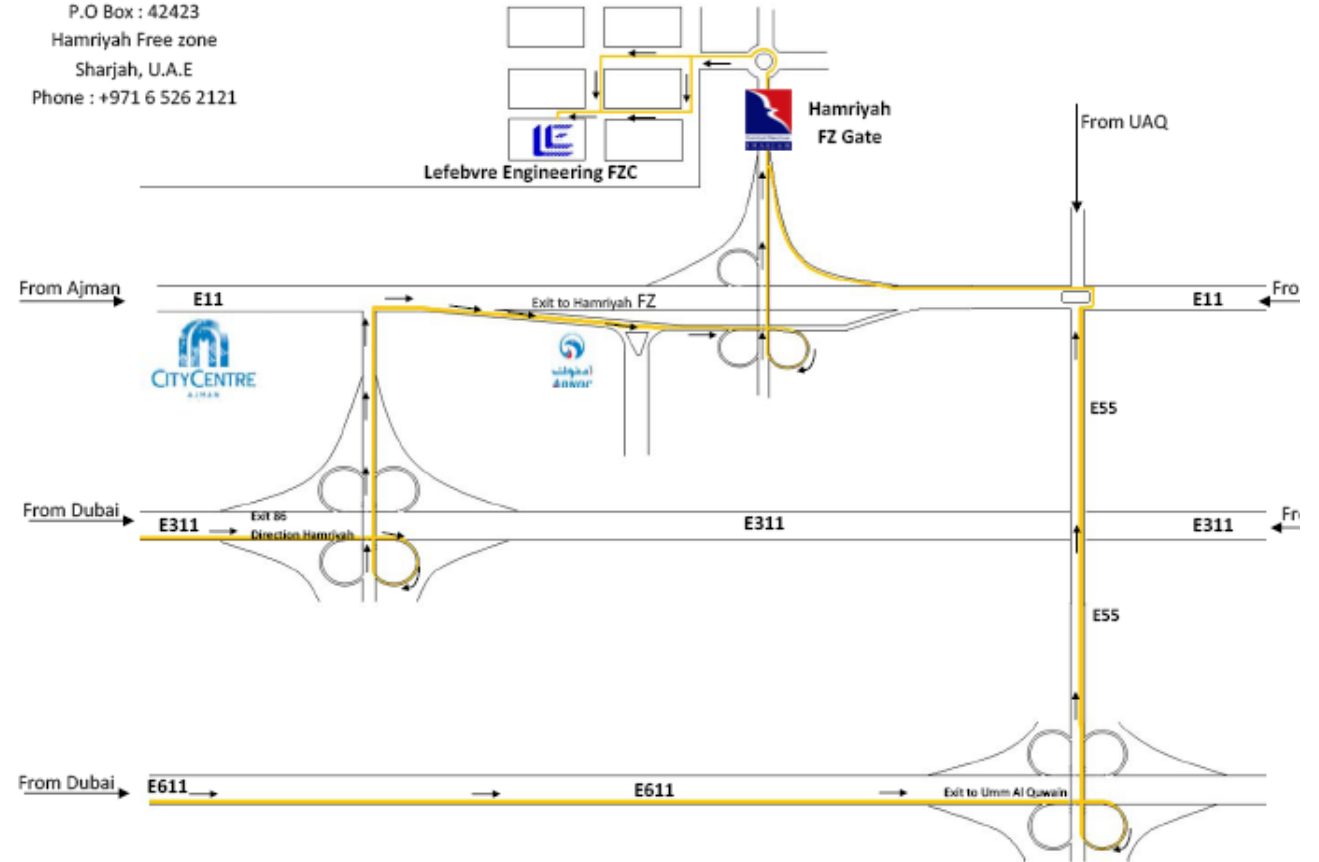
Our List of Clients snap shot since 2006-sharjah Facility





Location Map:
 Lefebvre Engineering FZC
 Plot : 2H-02
 P.O Box : 42423
 Hamriyah Free zone
 Sharjah, U.A.E
 Phone : +971 6 526 2121

GPS :
 Longitude : 55.50111
 Latitude : 25.45139



**Summary
Lefebvre
Engineering
FZC**

- **Believes in quality and timely deliveries**
- **Shop conveniently located in Hamriyah Free Zone, UAE having an easy access to GCC .**
- **Expertise since 1914...**
- **Faith in long term partnerships**

